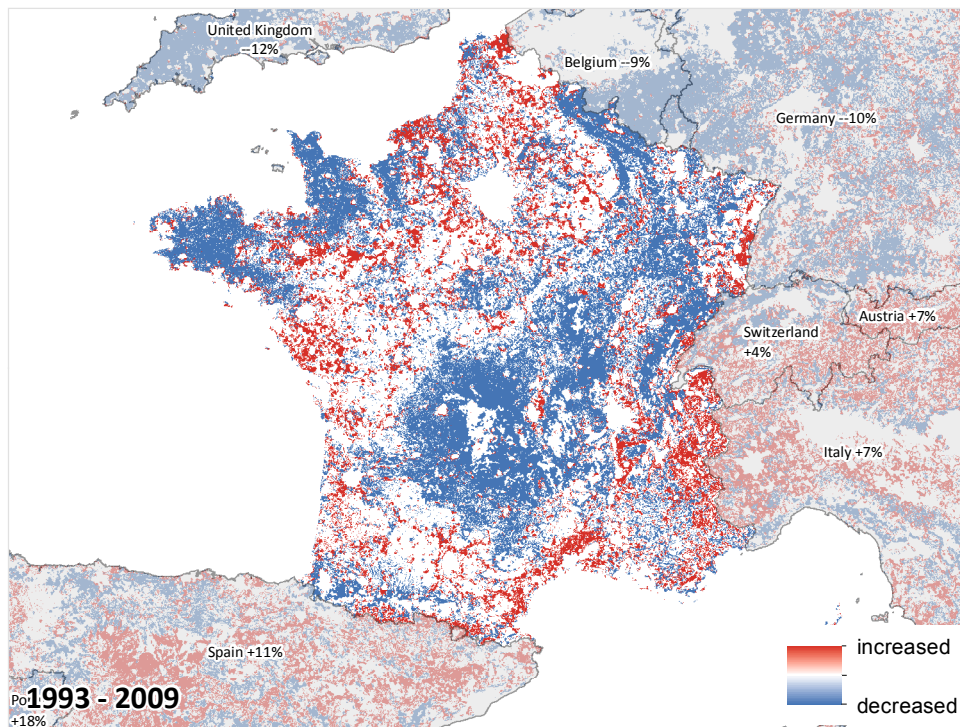
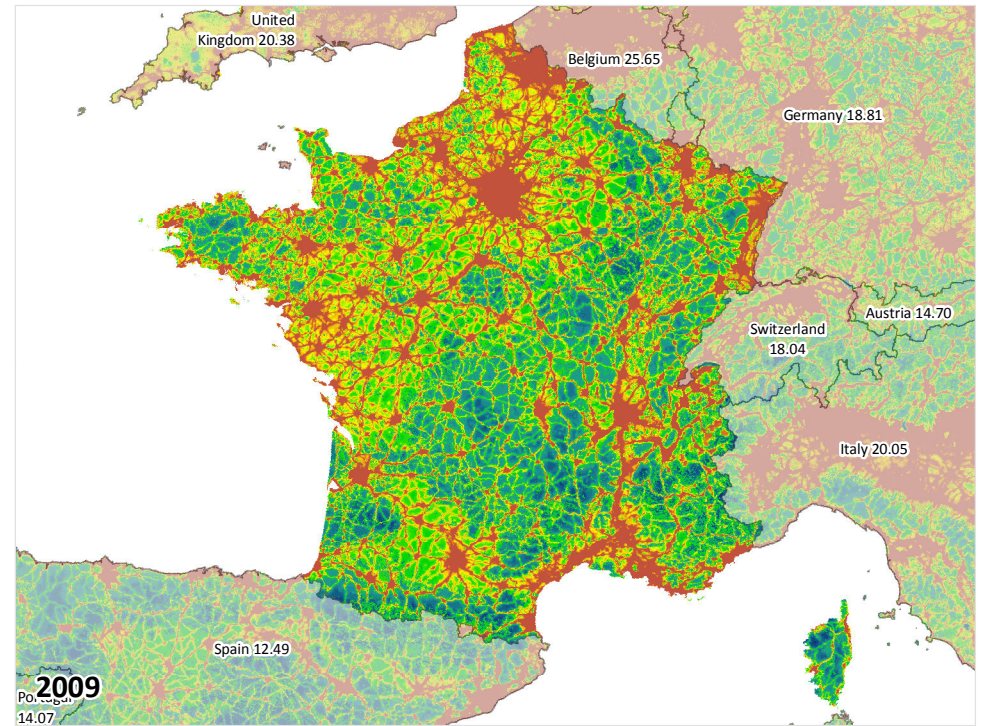
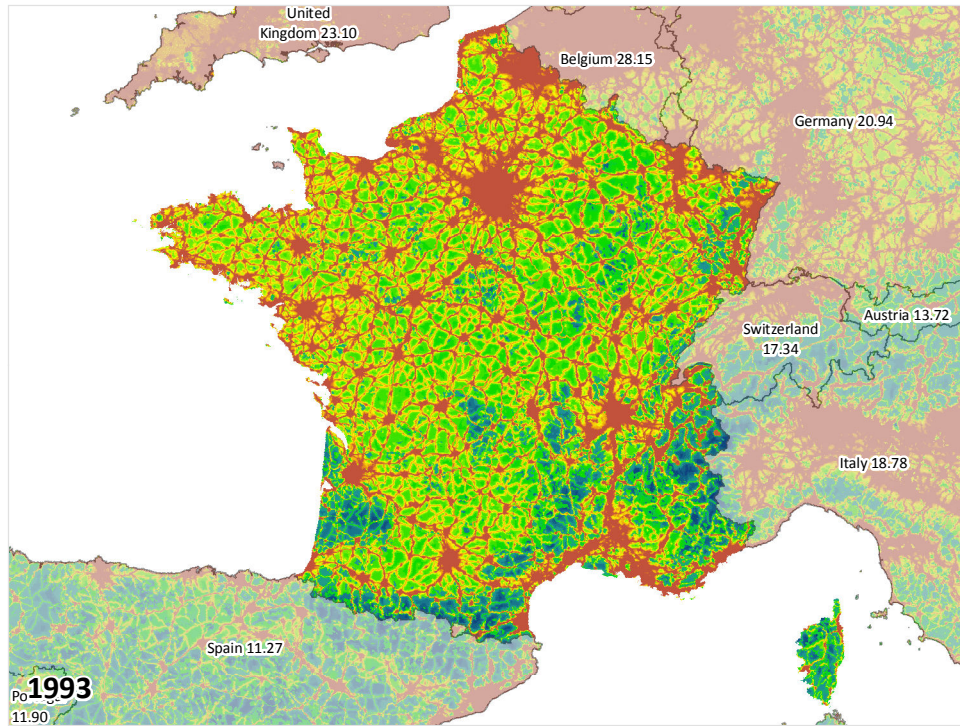


France's human footprint on the environment 1993 - 2009



Human Footprint mean, population, and GDP

	1993	2009	change	% change
Human Footprint mean	16.72	15.87	-0.85	-5.07%
Population	59.1 million	64.7 million	5.6 million	9.47%
GDP PPP (constant 2011 \$)	\$1.3 trillion	\$2.7 trillion	\$1.4 trillion	102.53%

Wild (0)

Developed (50)



The human footprint map measures the cumulative impact of direct pressures on nature from human activities, based on eight inputs.

Venter et al. 2016. Sixteen years of change in the global terrestrial human footprint and implications for biodiversity conservation. Nature Communications 7:12558. DOI:10.1038/ncomms12558.

Data access: <http://dx.doi.org/10.5061/dryad.052q5>



THE UNIVERSITY OF QUEENSLAND AUSTRALIA

